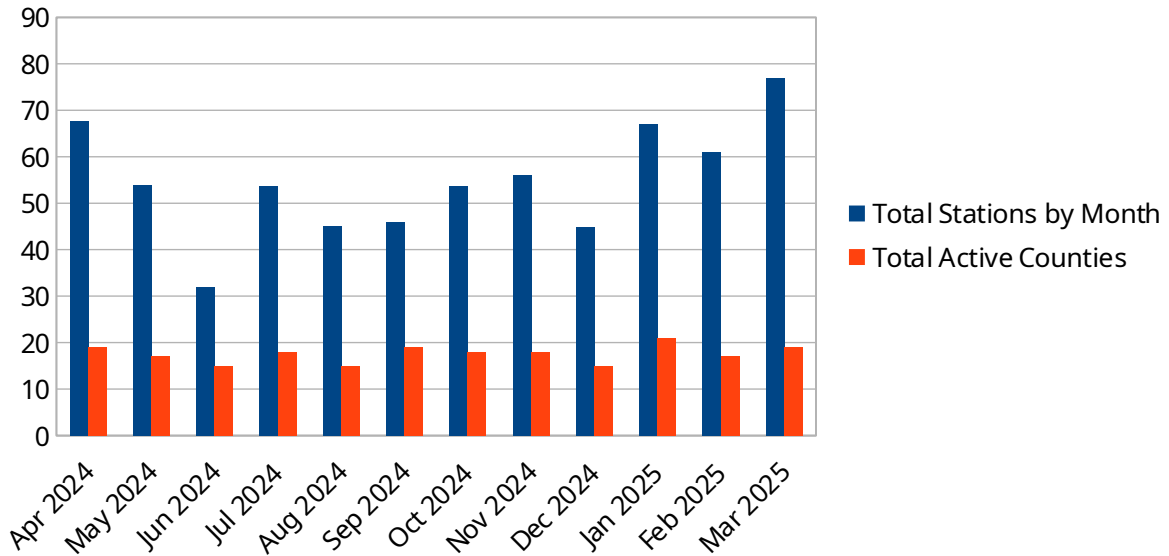


Number of OHDEN Checkins by District and County by Month													
Note: data are normalized to 4 net sessions per month													
2025	Jan	Feb	Mar	Apr	May	Jun	Jul	Aug	Sep	Oct	Nov	Dec	2024
Total by Month	67	61	77	67.6	54	32	53.6	45	46	53.6	56	44.8	
Total Active Co. (>= once / mo.)	21	17	19	19	17	15	18	15	19	18	18	15	
Note: Outside Stations are those outside Ohio but actively involved with OHDEN.													
Outside Misc. are those outside Ohio that may occasionally check in.													

Total Stations and Active Counties



March had good participation with 77 stations in the log and 19 counties active.

There was a new station from Portage county, N8WCP.