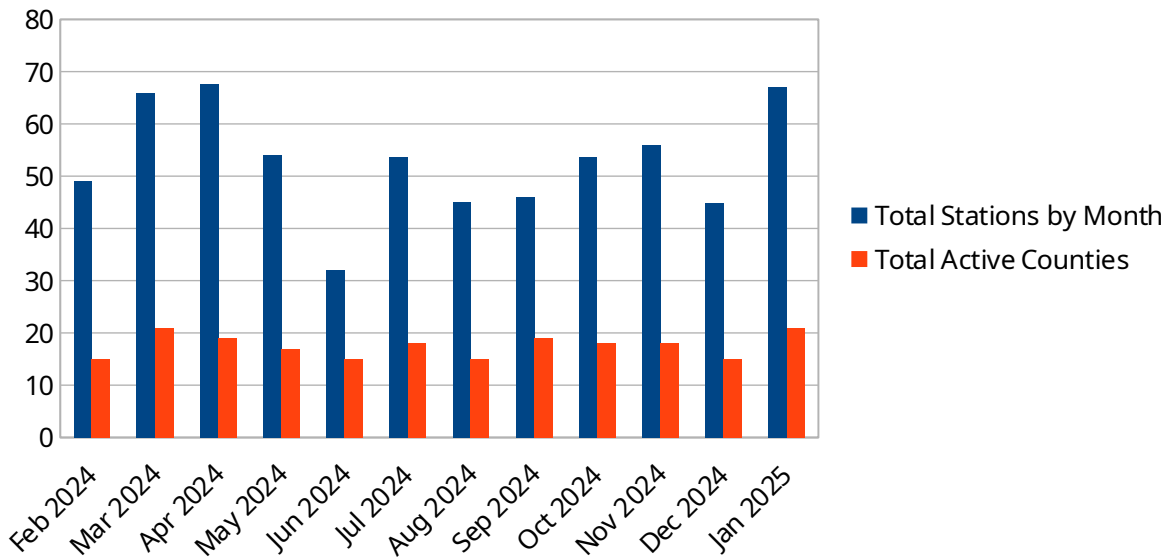


Number of OHDEN Checkins by District and County by Month													
Note: data are normalized to 4 net sessions per month													
2025	Jan	Feb	Mar	Apr	May	Jun	Jul	Aug	Sep	Oct	Nov	Dec	2024
Total by Month	67	49	66	67.6	54	32	53.6	45	46	53.6	56	44.8	
Total Active Co. (>= once / mo.)	21	15	21	19	17	15	18	15	19	18	18	15	
Note: Outside Stations are those outside Ohio but actively involved with OHDEN.													
Outside Misc. are those outside Ohio that may occasionally check in.													

Total Stations and Active Counties



The first month of 2025 begins well with 67 stations in the log for January. This includes three new stations and a new Ohio county, Geauga. The numbers were boosted a bit by seven guest stations from outside Ohio.